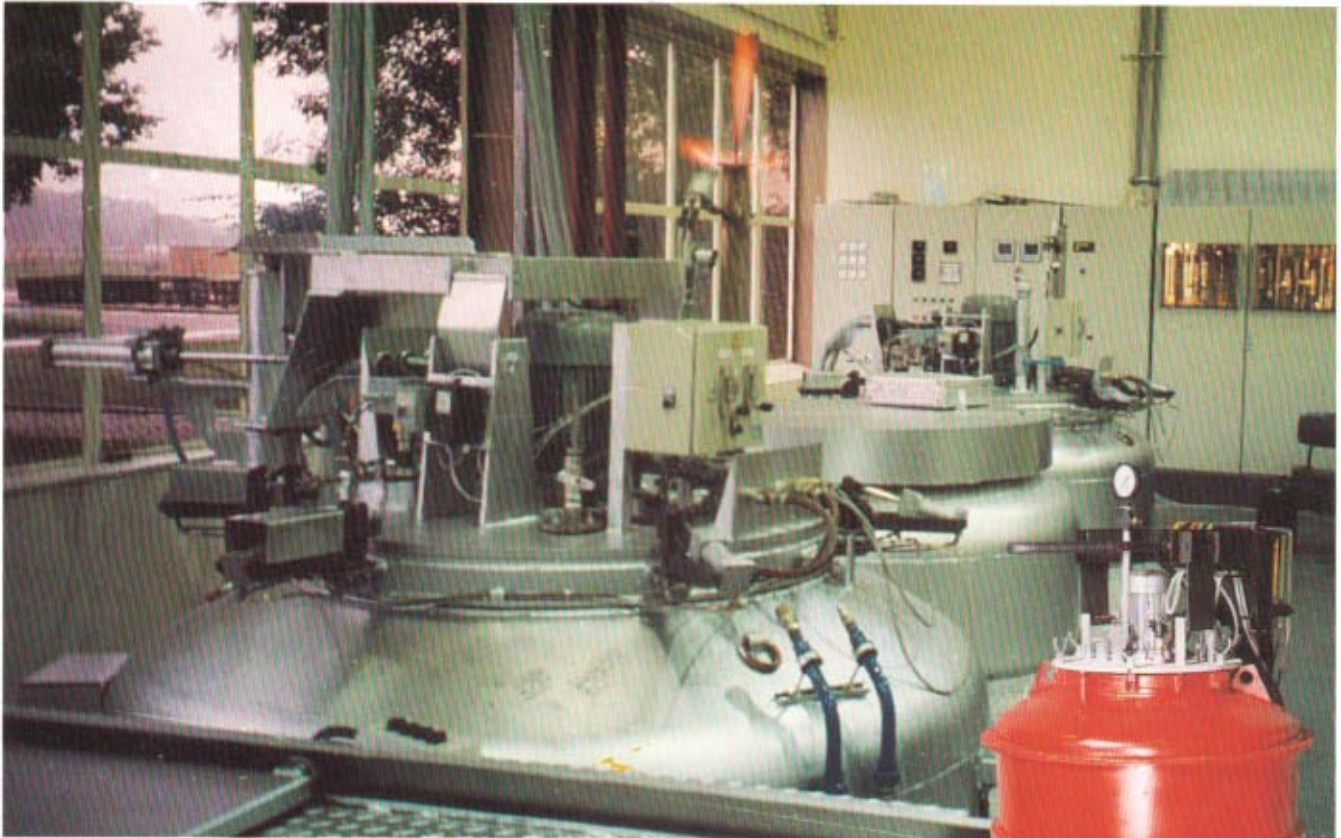


PIT RETORT FURNACES

FOR

- CARBURISING
- CARBONITRIDING
- NITRIDING
- NITROCARBURISING
- DECARB ANNEALING
- STEAM TEMPERING



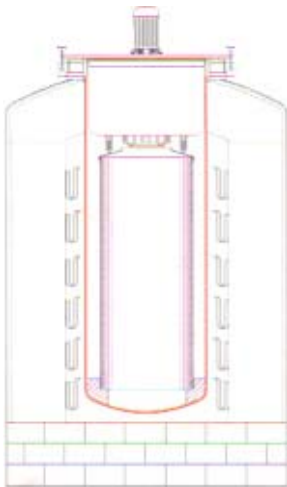
G.E. Totten and Associates, LLC

P.O. Box 30108
Seattle, WA 98103
United States of America

Phone: +1-206-788-0188
Mobile: +1-206-427-9928
Fax: +1-815-461-7344
Email: sales@getottenassociates.com
URL: www.getottenassociates.com

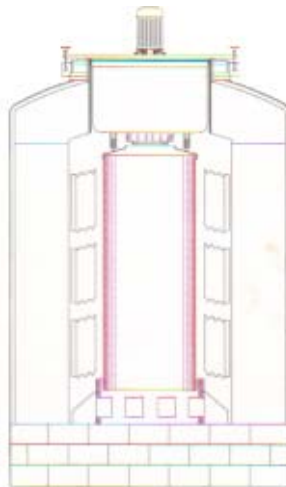


PRODUCTION PROGRAM



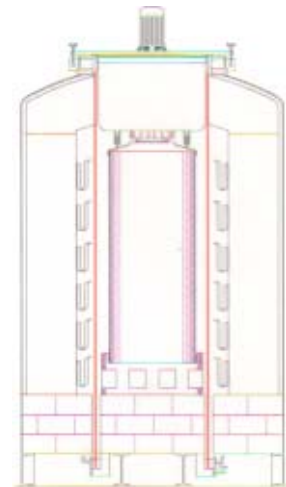
MODEL CRF

- Gas tight retort and lid assembly
- Standard sizes from 300 mm Ø x 600 mm deep (100 kg gross) up to 1200 mm Ø x 2500 mm deep (3500 kg gross).
- For Carburising, Carbonitriding, Nitriding, Nitrocarburising, Decarburisation Annealing and Steam Tempering.
- Retort with clamped lid assembly can be removed for colling under protective atmosphere in a separate chamber. Also cooling within the furnace and direct quenching from the hot furnace.
- Combination Carburising + Nitriding furnace also available.



MODEL ORF

- Designed for heavy loads.
- Bottomless retort with cold oil seal.
- Standard sizes from 1200 mm Ø x 1200 mm deep (2000 kg gross) up to 1800 mm Ø x 3000 mm deep (9000 kg gross).
- Generally used for carburising but also suitable for other processes.
- Either furnace cooling or quenching from the hot furnace.



MODEL NRF

- Designed for deep case carburizing of heavy work loads for case depth above 1.5 mm
- No retort in furnace.
- Gas tight shell and lid sealing.
- Heating by corrugated sheet heating elements or fuel / electric radiant tubes.
- Standard sizes from 600 mm Ø x 1200 mm deep (800 kg gross) up to 1800 mm Ø x 3000 mm deep (900 kg gross).

PROCESS CONTROL SYSTEMS & HARDWARE FOR DIFFERENT PROCESSES.

CUSTOM DESIGNED FURNACES ON REQUEST.

EQUIPMENT FEATURES & OPTIONS

- Electrically heated or oil / gas fired
- Distortion resisting lid design.
- Optimized alloy fan design.
- Guided convection.
- Generous temperature control zoning.
- Thyristor heating control.
- Atmosphere (gas / liquid) mixing & dosing systems.
- Auto process control with gas sensor (oxyprobe, infrared, dew point or nitriding probe) and temperature inputs.
- Programmable controllers with remote connectivity.
- Multiple atmosphere capability.
- Steam generators for steam tempering furnaces.
- Humidifiers for decarb annealing furnaces.
- Removable hydraulic lid lift and swing.
- Retort external cooling.
- Atmosphere gas cooling & recirculation.
- All necessary auxiliary equipment, fixturing, washing machines, quench tanks, cooling chambers, tempering furnaces, etc.